


**EUROGUIDELINES IN  
CENTRAL AND  
EASTERN  
EUROPE  
NETWORK GROUP**



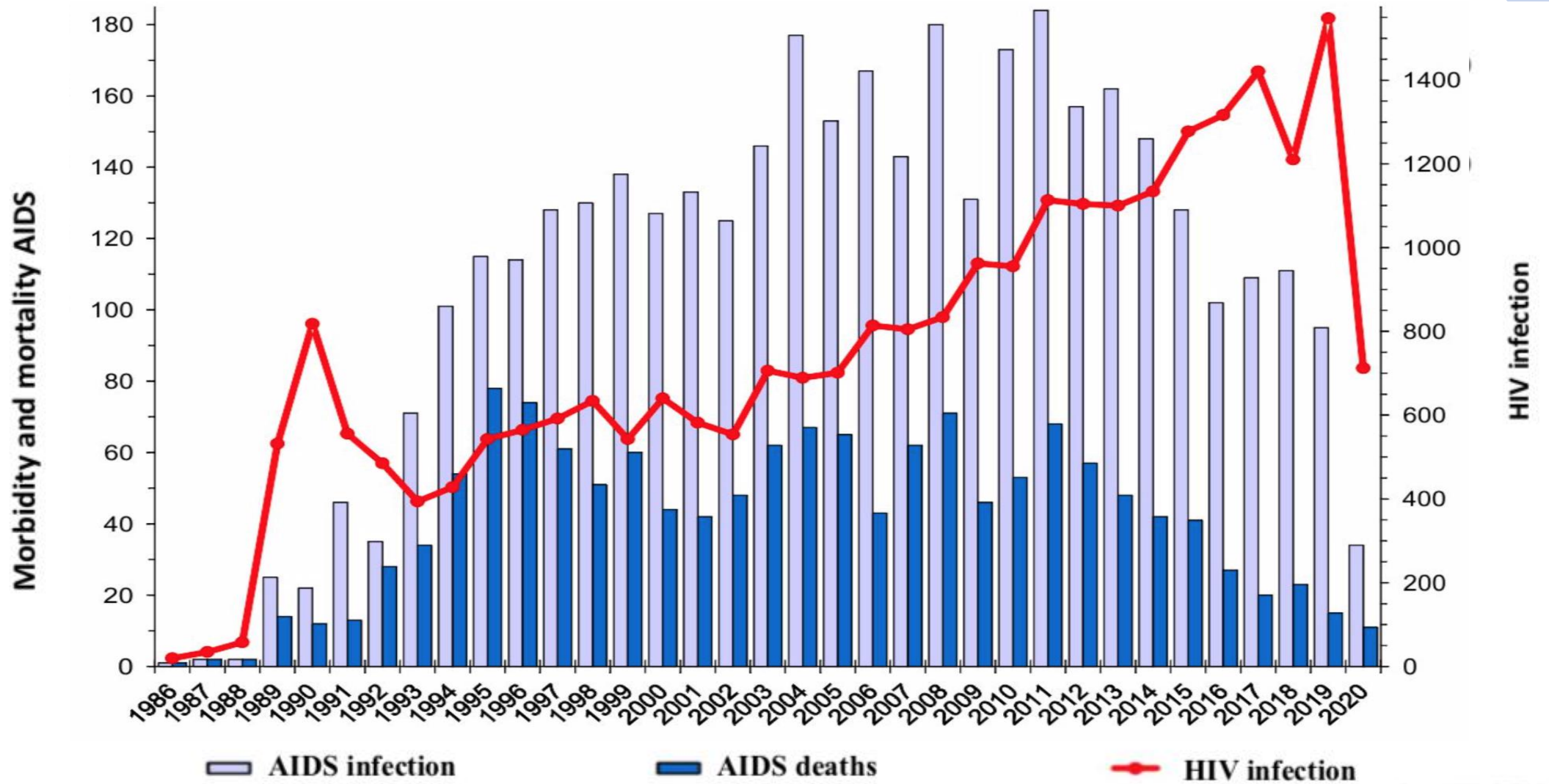
# HIV epidemiology in Poland

Agata Skrzat-Klapaczyńska

## GENERAL INFORMATION

- **Since the beginning of the epidemic in 1985, up until December 31st 2020, HIV infection has been diagnosed in 26 383 Polish citizens and in other citizens residing in Poland**
- **In total, 3 818 AIDS cases have been reported; 1 439 patients died**
- **Each year approximately one thousand new HIV cases are reported**

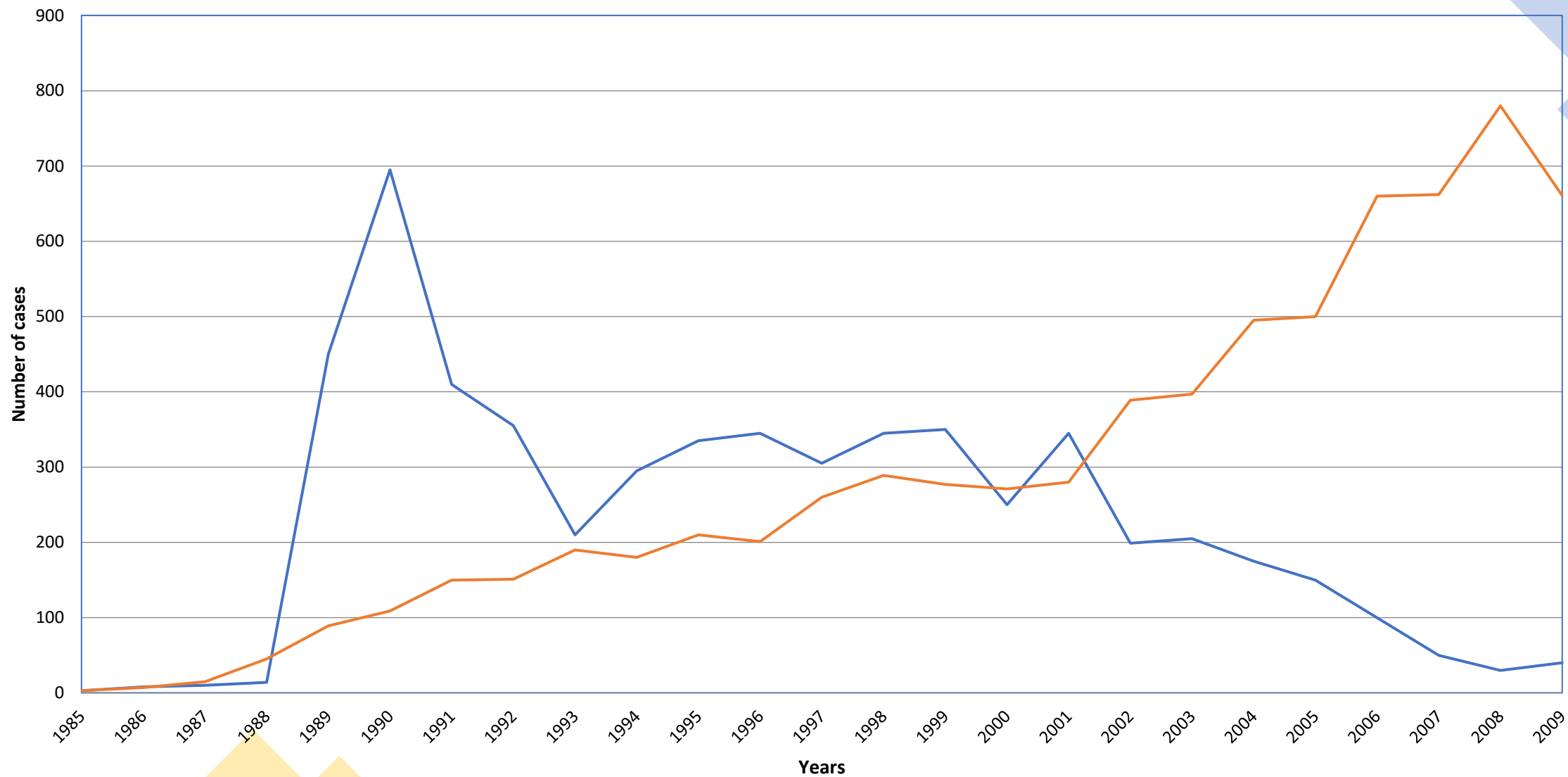
# HIV infection, AIDS and deaths in 1986-2020




## **ROUTES OF HIV INFECTION**

- **In the years 1985-1996, the majority of HIV infections (67%) were related to the use of intravenous drugs**
- **In 2000 a "change" in infection routes was observed in Poland - the percentage of people infected through sexual contact was higher than through intravenous drug use**

# Routes of HIV infection intersection in Poland (data for 1985-2009 according to the National Institute of Hygiene)



 infections among IVDUs

 other routes of infection